



Mechanism and mitigation of earth fissure in China

Chang'an University Jianbing Peng

e-mail:dicexy_1@chd.edu.cn

April. 2017

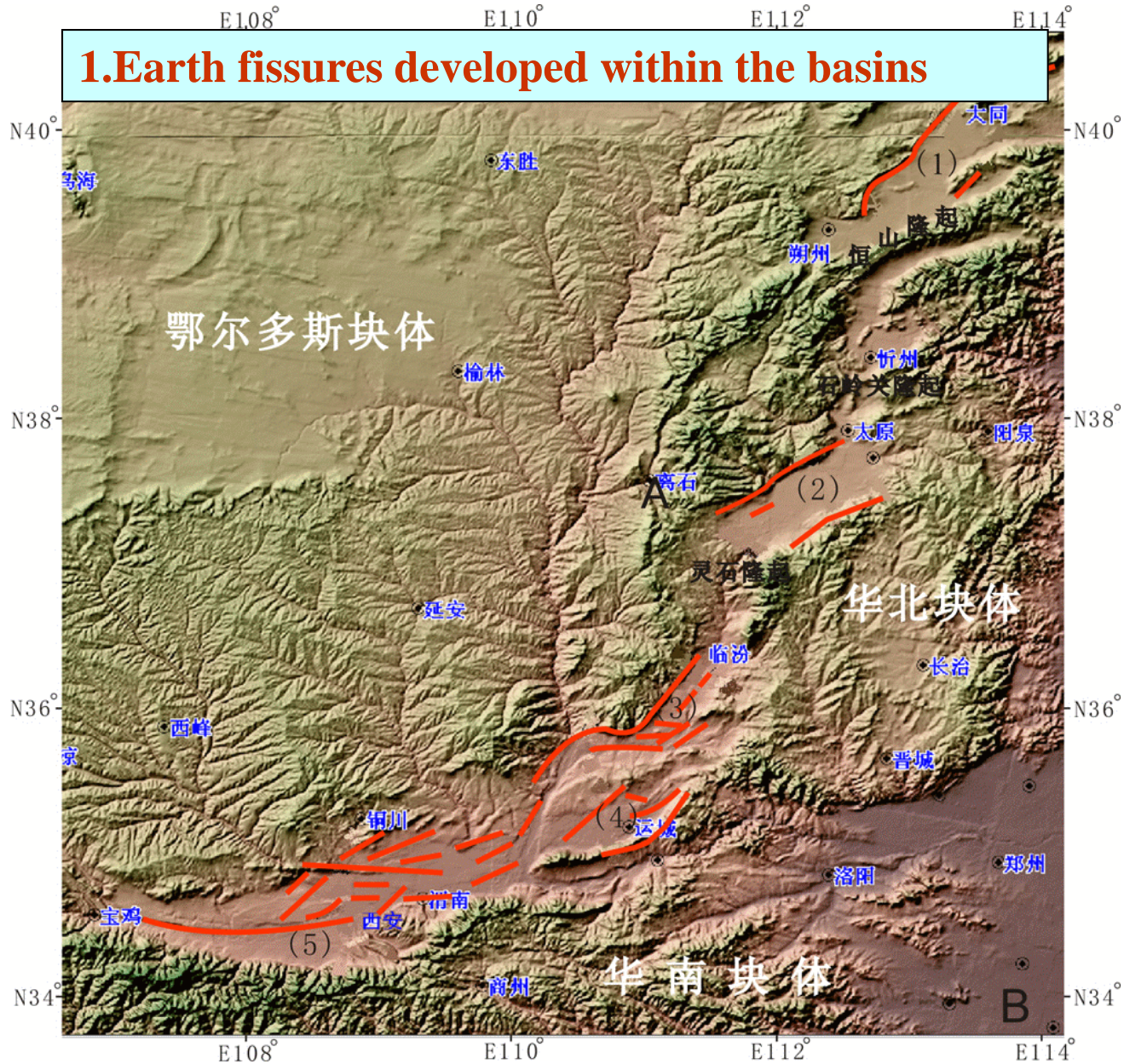


Main achievement

1: Ascertain the distribution of earth fissures in North China Area by field investigation and different scale mapping.



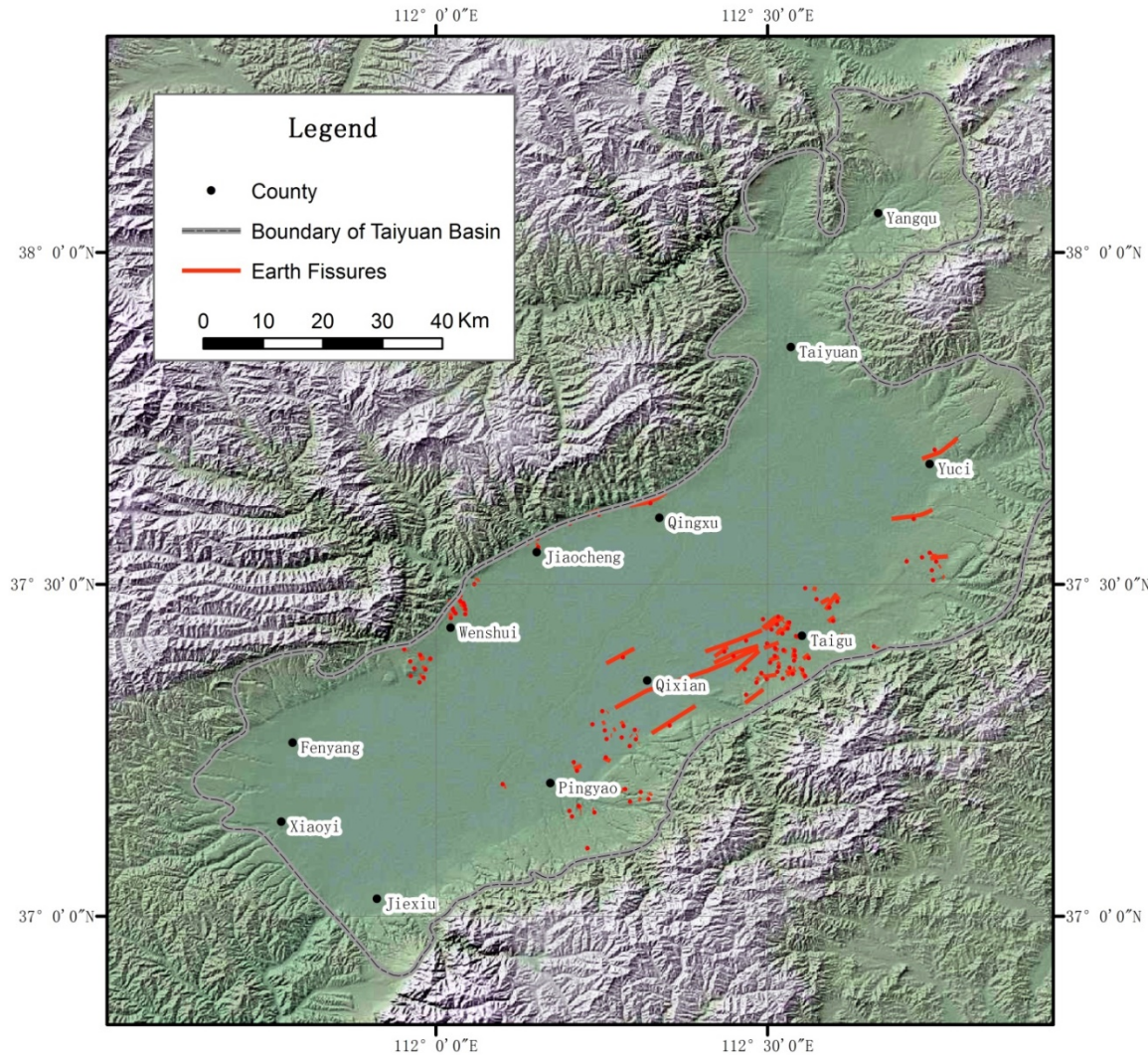
Main achievement





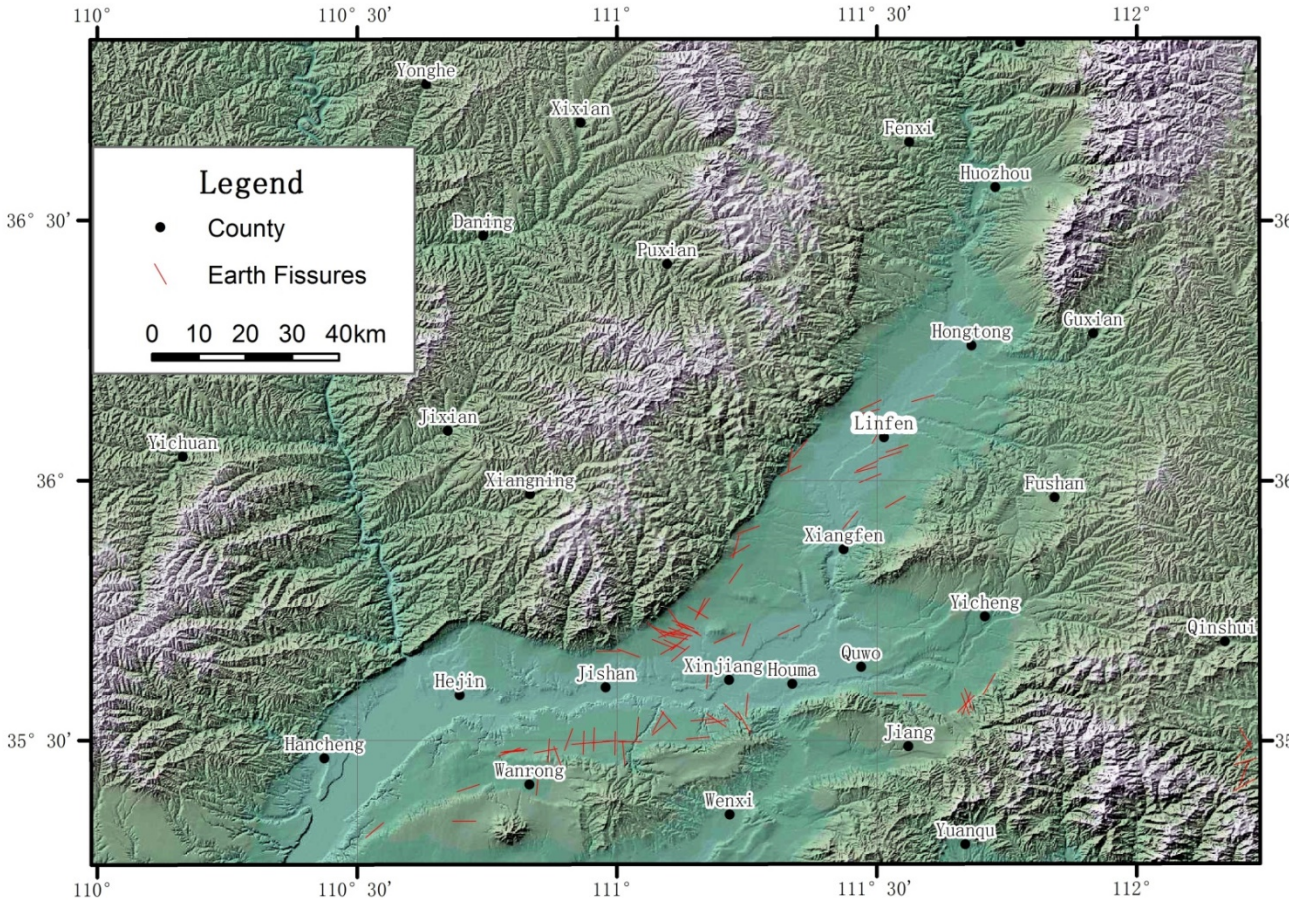
Main achievement

103 earth fissures appeared in Taiyuan basin, and most of them distributed along the east-west edge of the basin.



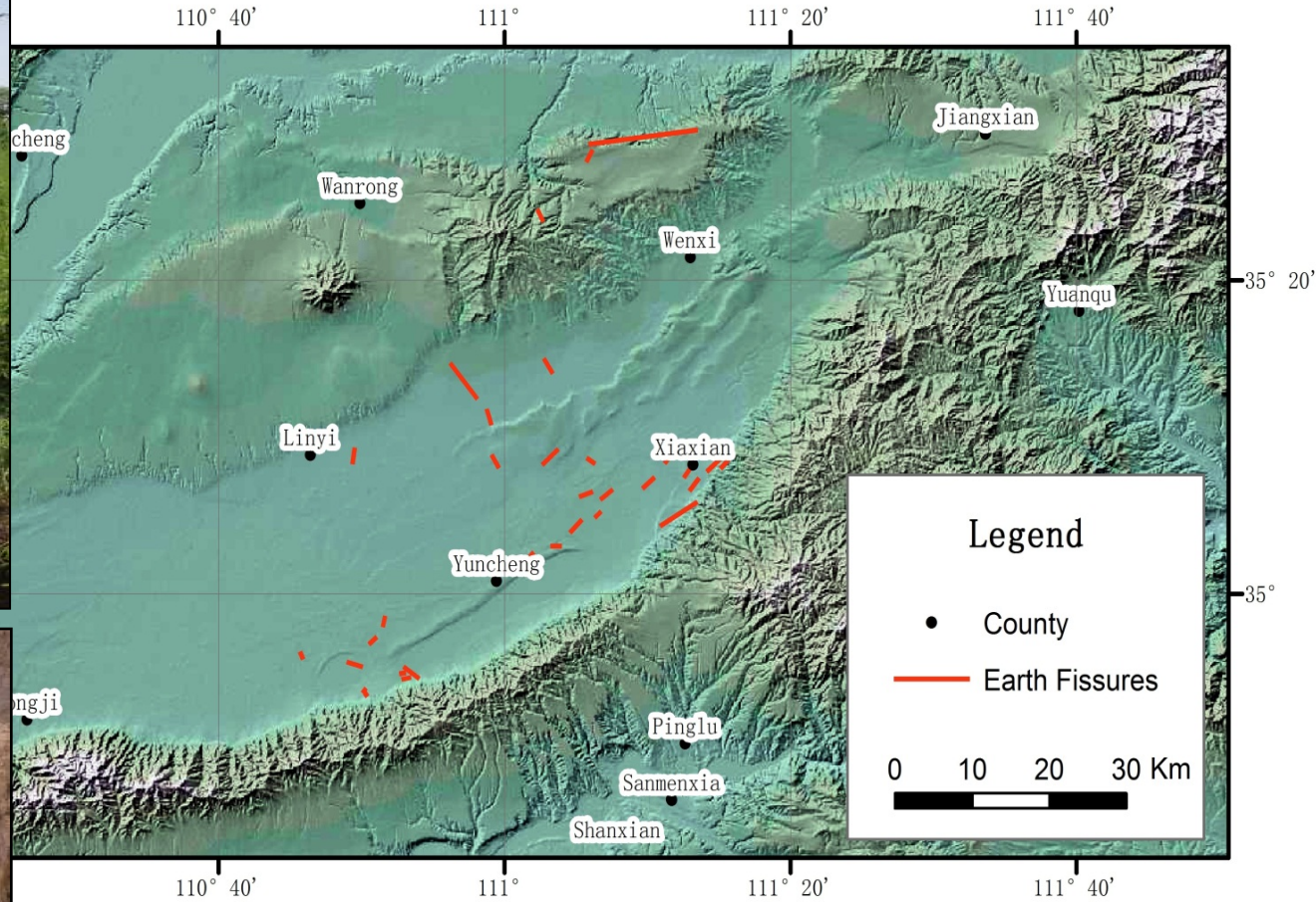
Main achievement

86 earth fissures appeared in Linfen basin, which mainly located at the west and south of the basin.



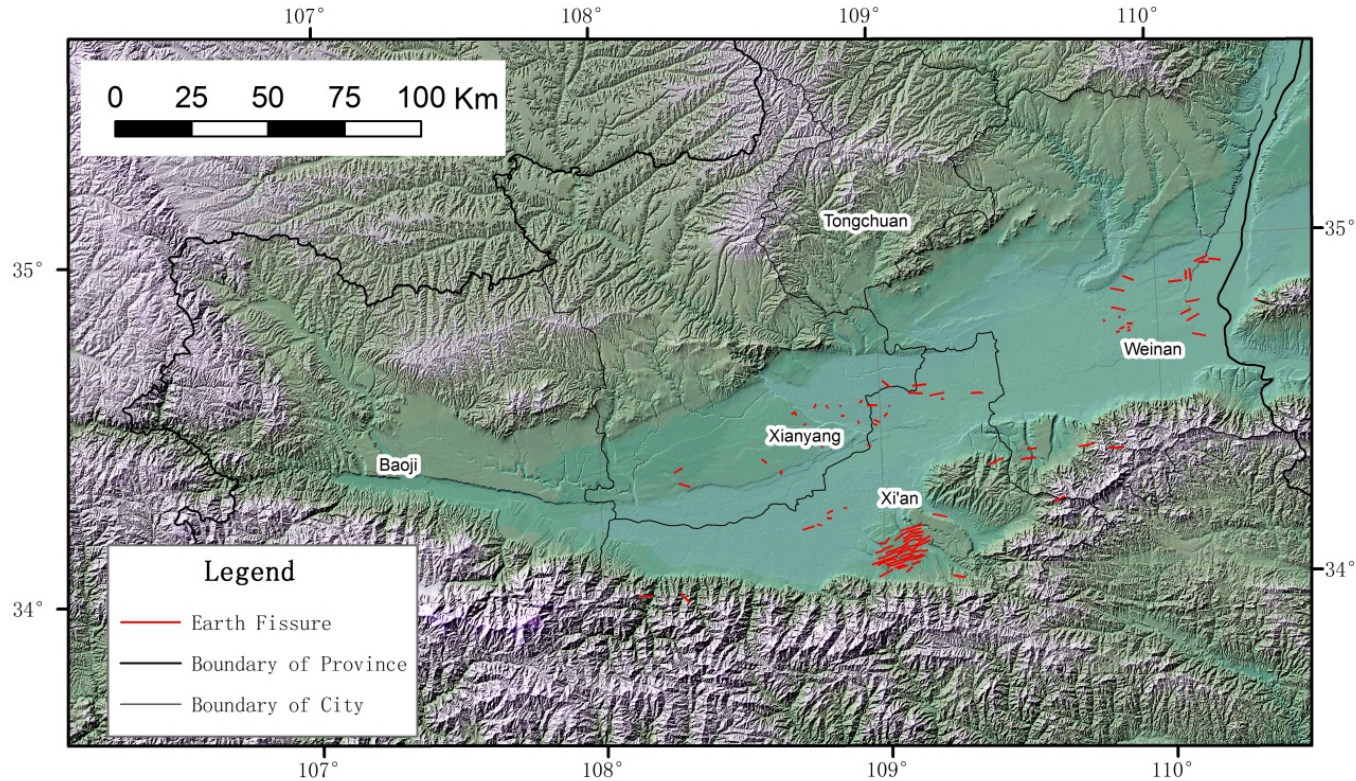
Main achievement

106 ground fissures appeared in Yuncheng basin, which mainly developed at the southeast of the basin.



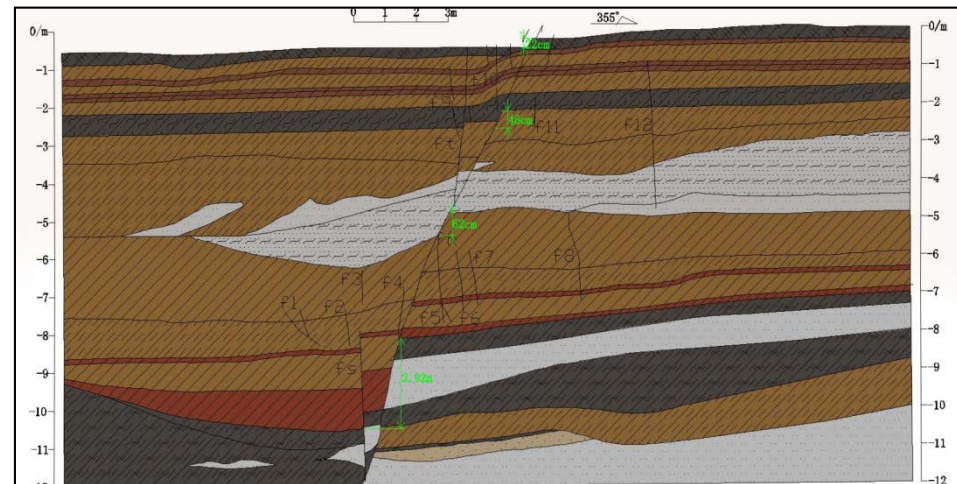
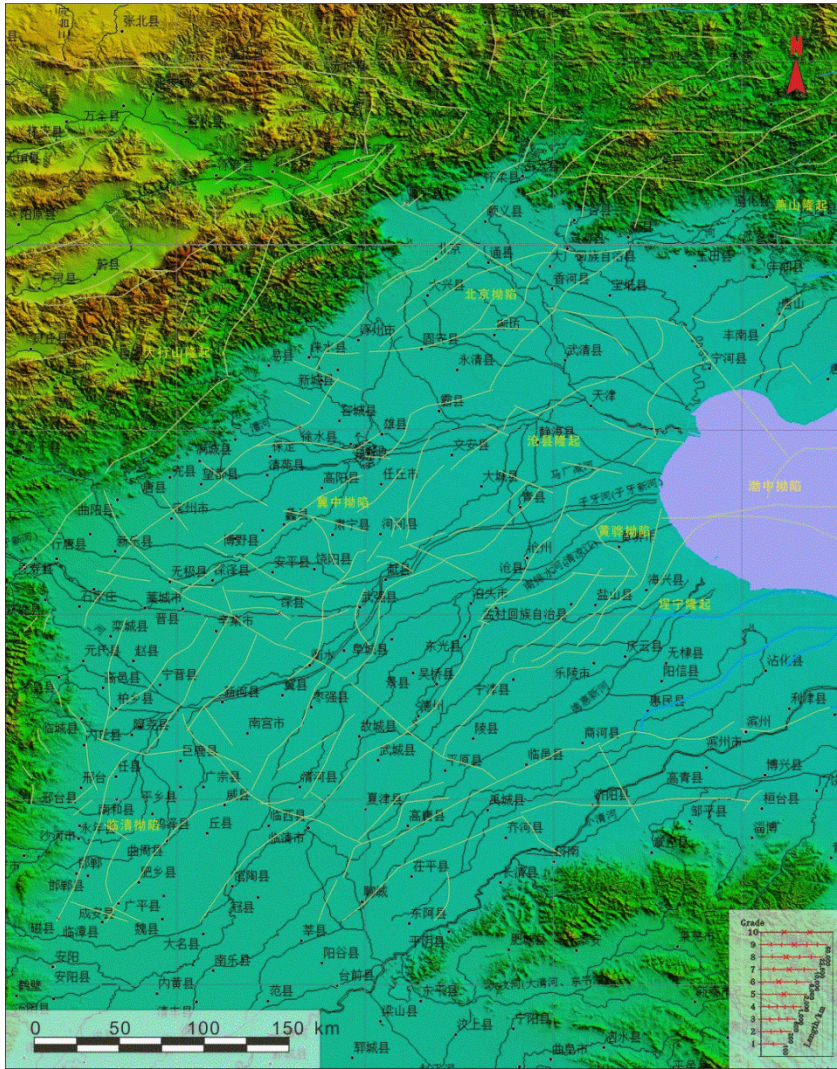
Main achievement

212 ground fissures appeared in Weihe basin, which concentrated at the center and east of the basin.



Main achievement

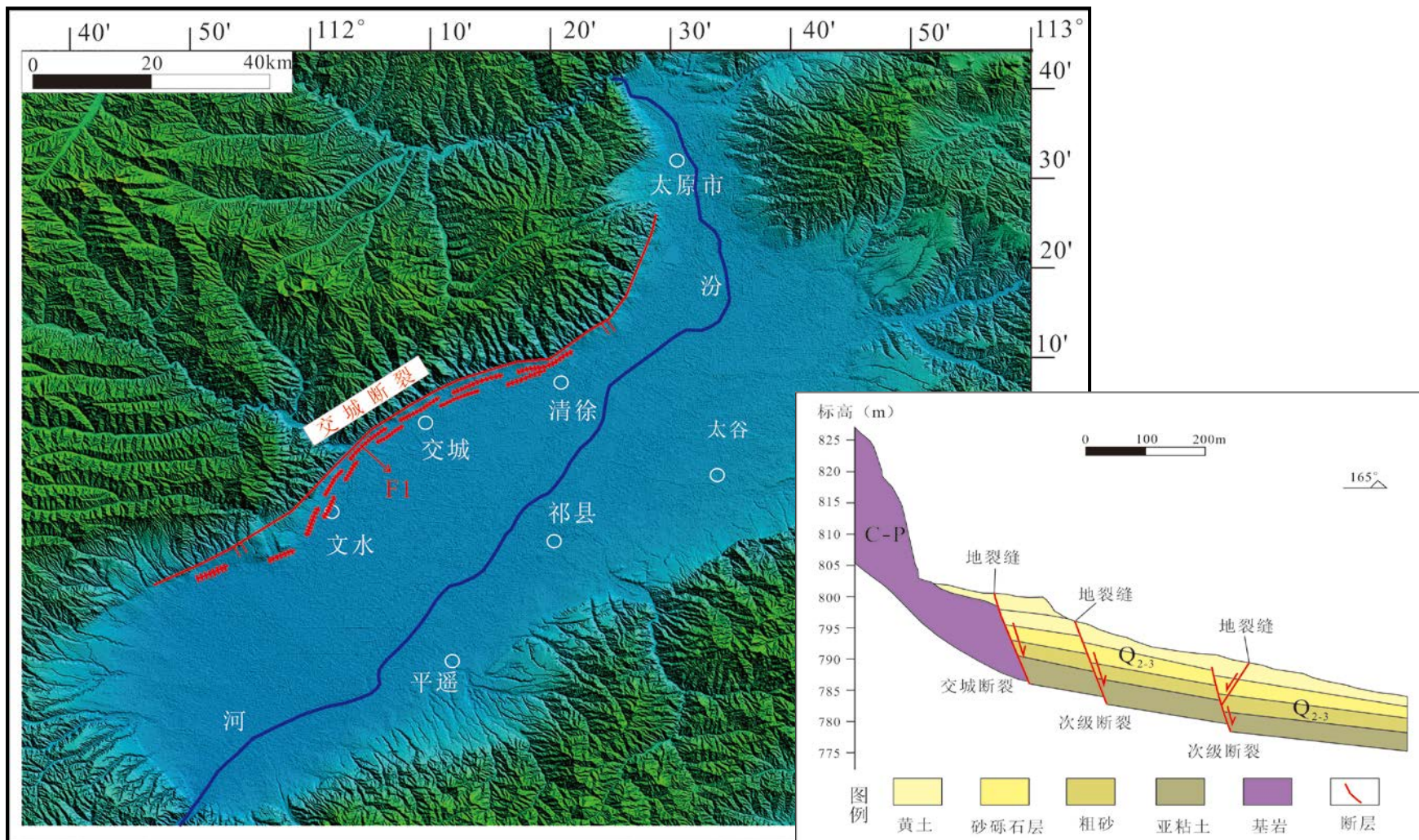
Earth fissures in North China Plain is main distribution along Taihang mountain-front fault and within the secondary faulted basin



Main achievement

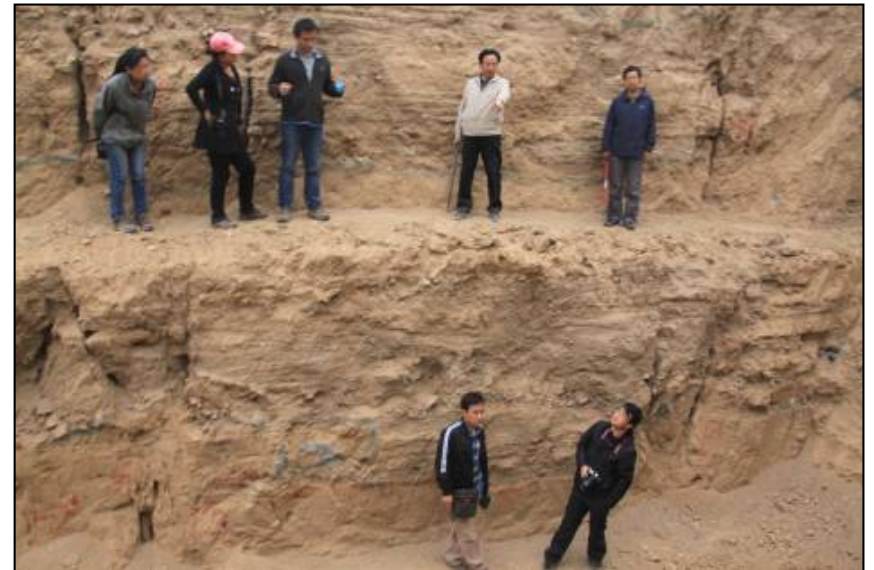
2、Earth fissure concentrate on mountain-front fault

The length of fissure along Jiaocheng fault can be up to 46 km



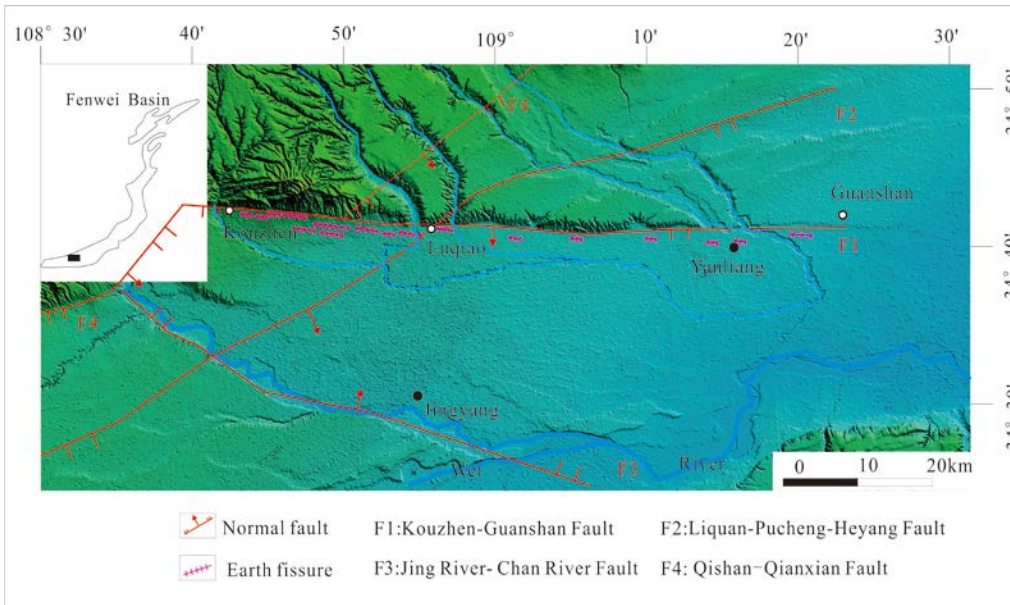
Main achievement

Earth fissures along Luoyun Mt. fault at western edge of Linfen Basin.



Main achievement

Earth fissure along Kouzhen-Guanshan Fault in Wei River Basin

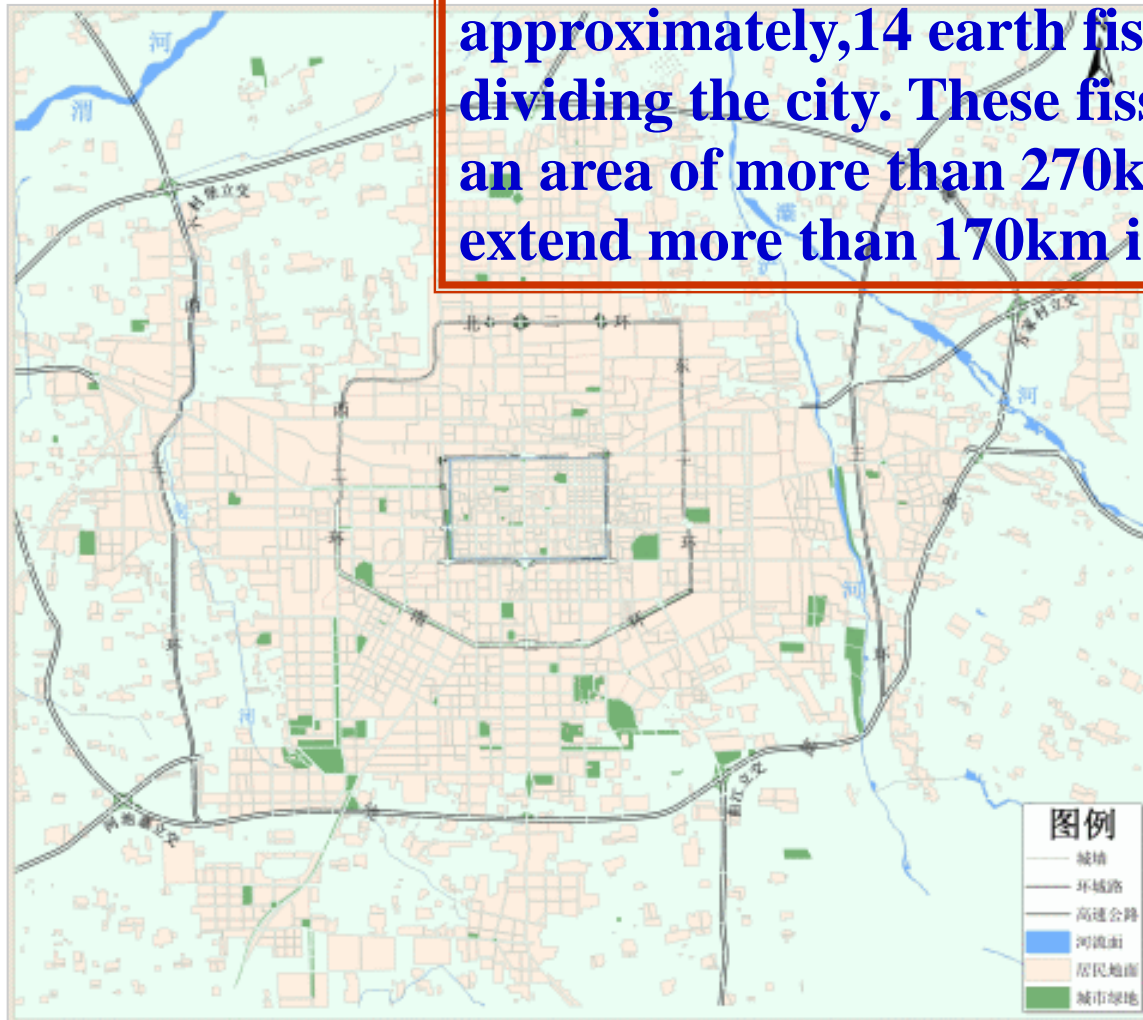




Main achievement

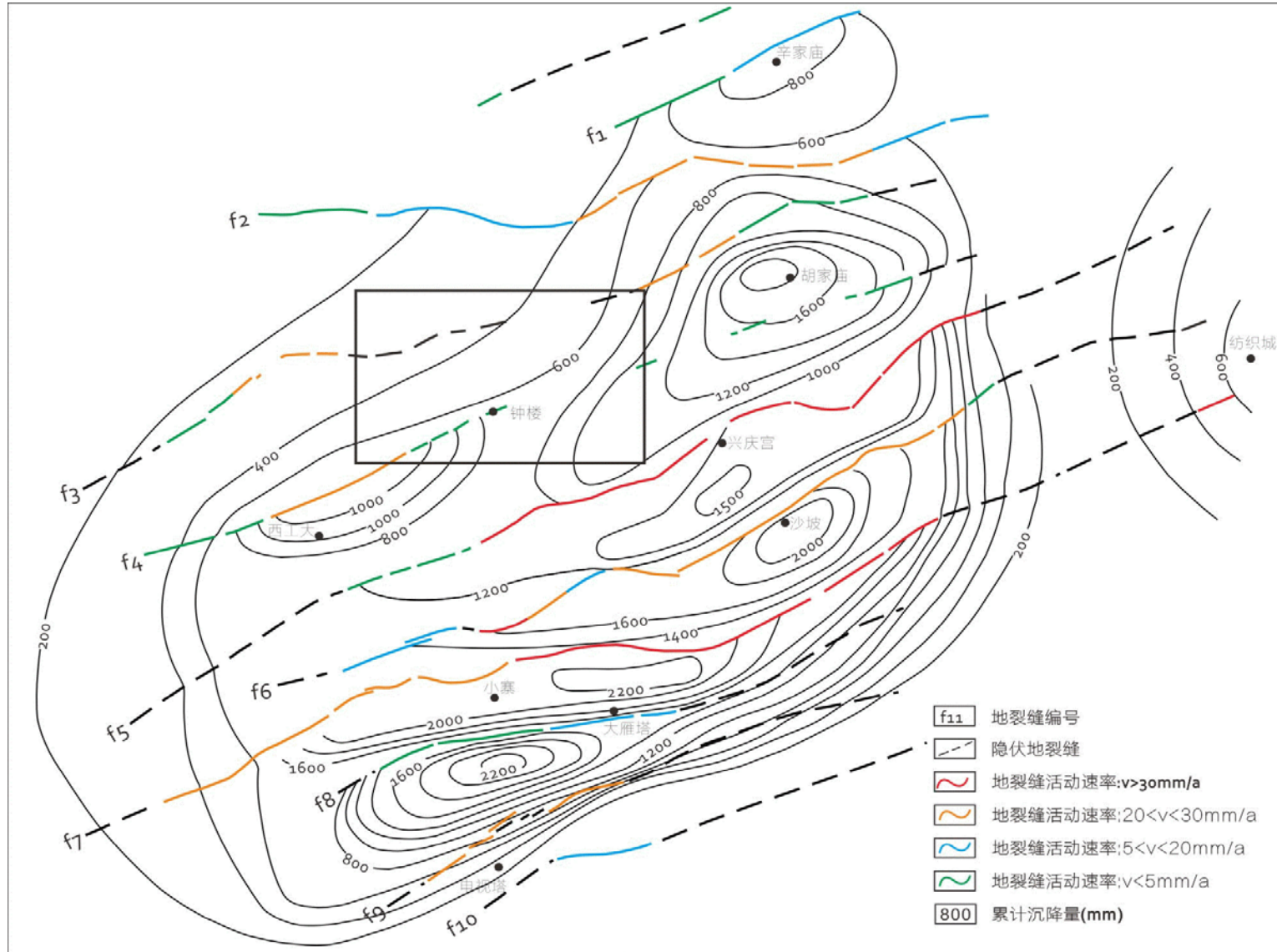
3. Massively developed in big cities

With similar directions as NEE and approximately, 14 earth fissures are dividing the city. These fissures cover an area of more than 270km² and extend more than 170km in length.



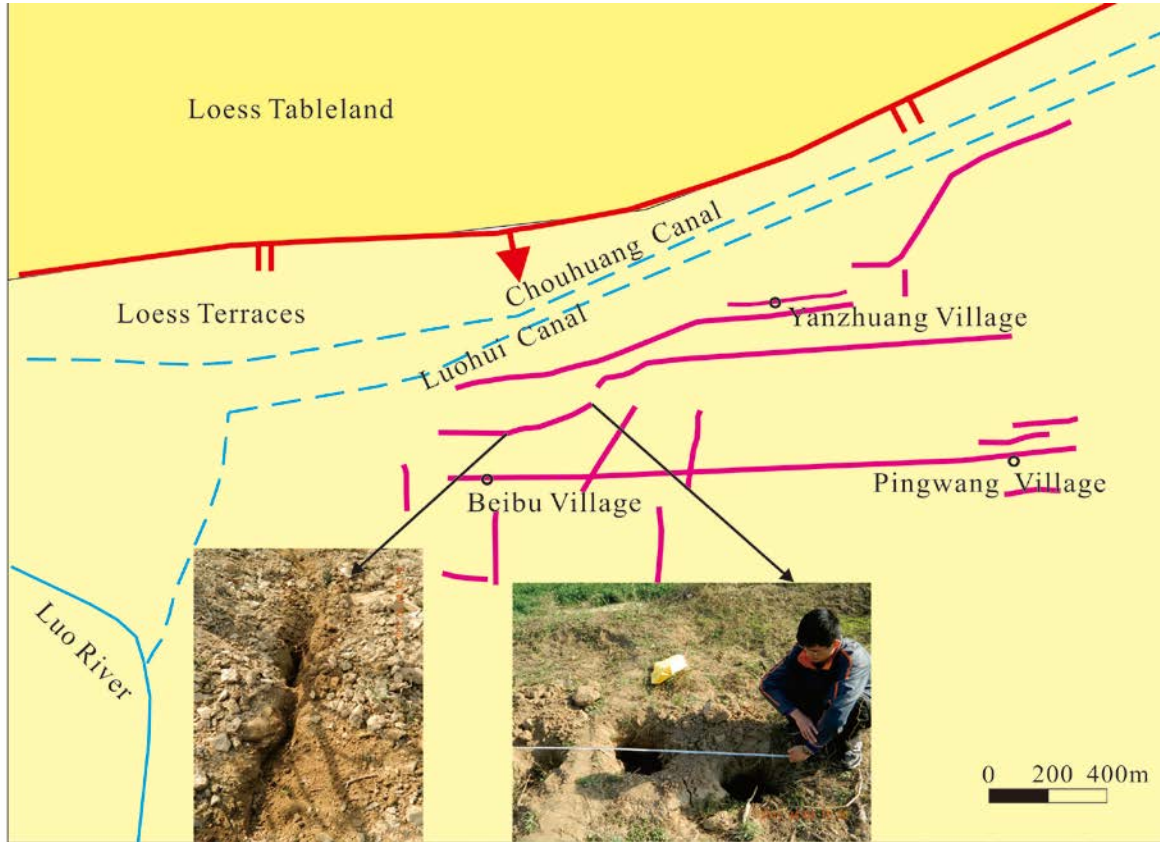
Main achievement

4、Earth fissure accompanying land subsidence



Main achievement

5、Earth fissure dispersing in collapsible loess area



Engineering geological profile [---]

